

技术要求

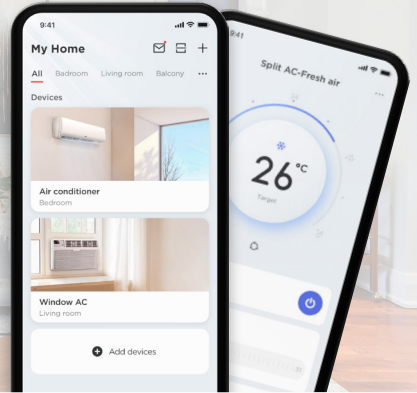
1. 纸张边角应裁剪整齐；印刷面整洁，无明显脏污、残缺；
2. 内容完整，印刷字迹清晰、美观，字体、颜色、图案与上述内容一致，无漏印、错印、印刷不清晰，没有明显的拖墨和重影等缺陷；
3. 成品规格为A5；纸质为128g/m²；未注公差按GB/T1804-c级；
4. 颜色要求：按文件彩色印刷，要求正反面印刷，送样确认；

					印刷专用件	81101-014582		
A	ECN100032688		刘红林	2025.12.17	WIFI说明书(鸿鹄)(英文)	物料编码	质量	比例
标记	更改文件号		签字	日期				
设计	黄春梅	2022.12.02	工艺		铜版纸	TCL空调器(中山)有限公司		
校对	石丹丹		标准化					
审核	柳碧青		批准	曾霞	共 1 张			

Control Your AC with TCL HOME App



Scan to Download TCL HOME App



|| What Can TCL HOME Provide You ||



Control your AC with your phone anywhere.



Set a comfortable temperature before you are home.



Operate your AC by voice commands.



Contact TCL customer service quickly in the TCL HOME.

Tips: You can also search for "TCL HOME" in App Store or Google Play to download and install.

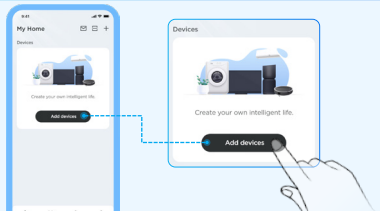
|| How to Connect Your Device ||

Step 1



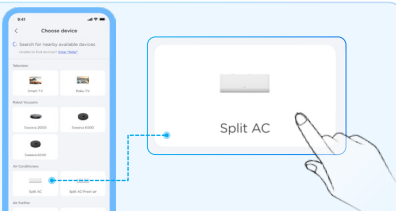
Download the TCL HOME app and register an account to log in.

Step 2



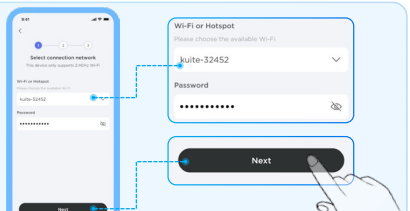
Click the "Add devices" button to enter the device list page.

Step 3



Select your device, and follow the instructions on the app to turn on the device's WIFI.

Step 4



Enter the network connection page, select WIFI (2.4G), enter the password, and click OK to connect.

|| Voice Control ||

- 1 After the device is connected to the network, please go to the profile page and click "Voice Assistant" to enter the voice operation settings.
- 2 Select your favorite voice assistant (Alexa or Google Assistant) to establish connection.
- 3 Once the connection is successful, TCL HOME will display a voice operating guide.

|| Precautions ||

- If the network connection fails, please reset the device and try again.
- When connecting to the Internet, please make sure that your Bluetooth and WIFI are turned on and the WIFI has Internet access.
- Place the mobile phone as close to the device as possible during the network connection.
- Make sure the phone is not in the power-saving mode.
- The WIFI connection only supports the 2.4GHz frequency band network and does not support the 5GHz network.

Tips: The features are among regions. Please refer to the app display for details. If you encounter any problems in using the air conditioner, you can contact TCL customer service at the "Support" section in the TCL HOME app.